

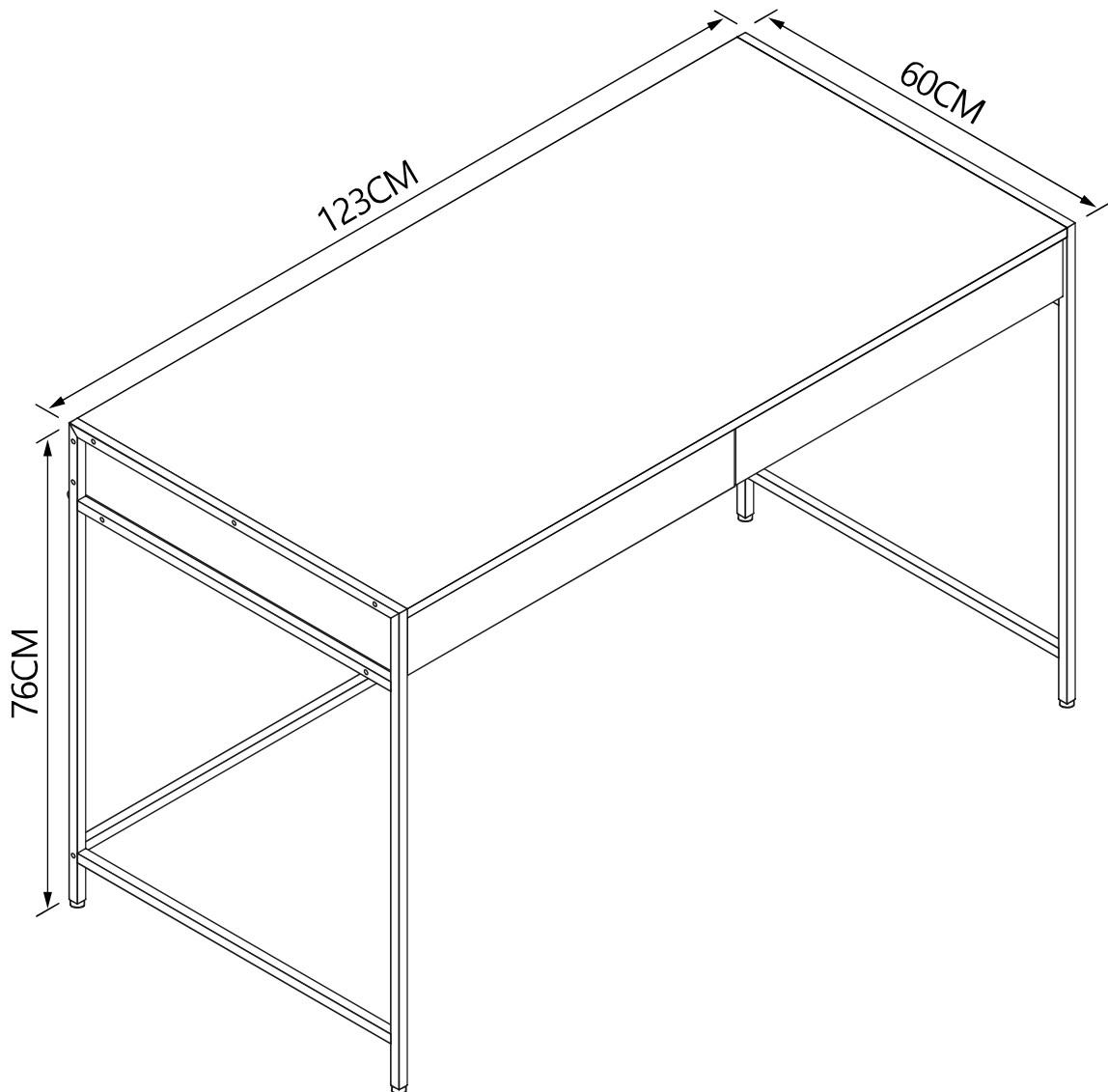


ASSEMBLY INSTRUCTION

RARK CITY DESK BRW

ITEM CODE : 61350

Imported by Amart Furniture Pty Ltd, Qld, Brisbane Australia. For any assistance with assembly or for missing parts please phone Amart Furniture , Customer Service Free call 1800 351 084

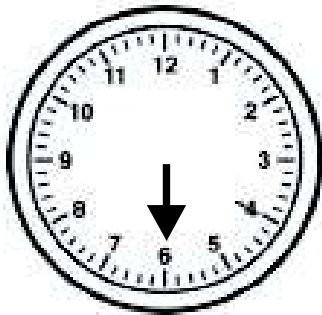


Imported by Amart Furniture Pty Ltd, Brisbane QLD Australia. For any assistance with assembly or for missing parts please phone Amart Furniture, Customer Service Free call 1800 351 084

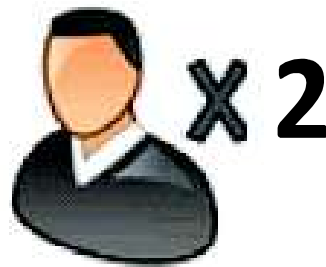
PRE-ASSEMBLY PREPARATION

BEFORE YOU START:

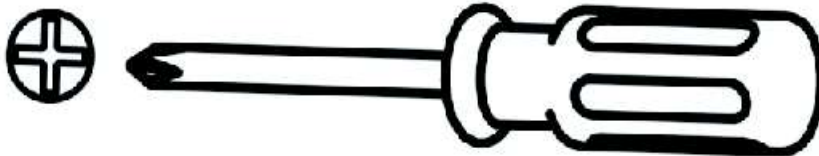
1. Choose a clean, level, spacious assembly area. Avoid hard surfaces that may damage the product
2. Take care when lifting. Product should be assembled as near as possible to the point of use
3. Ensure that you have all required contents for complete assembly
4. Always read the assembly instructions carefully before beginning assembly.
5. Keep all hardware parts and packaging out of reach of small children.
6. Do not over tighten the screws and bolts as this may damage the threads



ALLOW 30 MINUTES

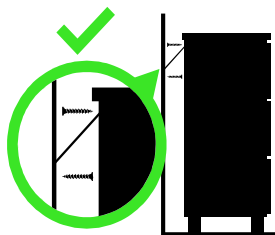


PEOPLE REQUIRED



ADDITIONAL TOOLS REQUIRED

WARNING



Children have died from furniture tipover.

- ALWAYS secure it with an anchor device.
- NEVER allow children to stand, climb or hang on drawers, doors, or shelves.
- NEVER open more than one drawer at a time.
- Place heavy items down low

NEVER put a TV on this furniture

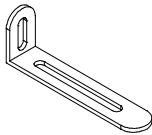


**This is a permanent label.
Do not remove!**

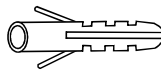
SAFETY BRACKETS INSTRUCTIONS

1. Attach one Mounting Plate to the wall with the Large Screws. Make sure to attach the Mounting Plate into a stud. If mounting into brick or masonry you will need to acquire wall anchors.
2. Attach the second Mounting Plate to the furniture frame with the Short Screws.
3. Move the furniture to its final position. Thread a Wall Strap through the both Mounting Plates and tighten until snug. Do not over tighten.
4. Make sure that the Mounting Plates are firmly attached to the wall and furniture and that the Wall Strap is snug.

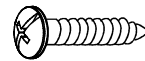
HARDWARE



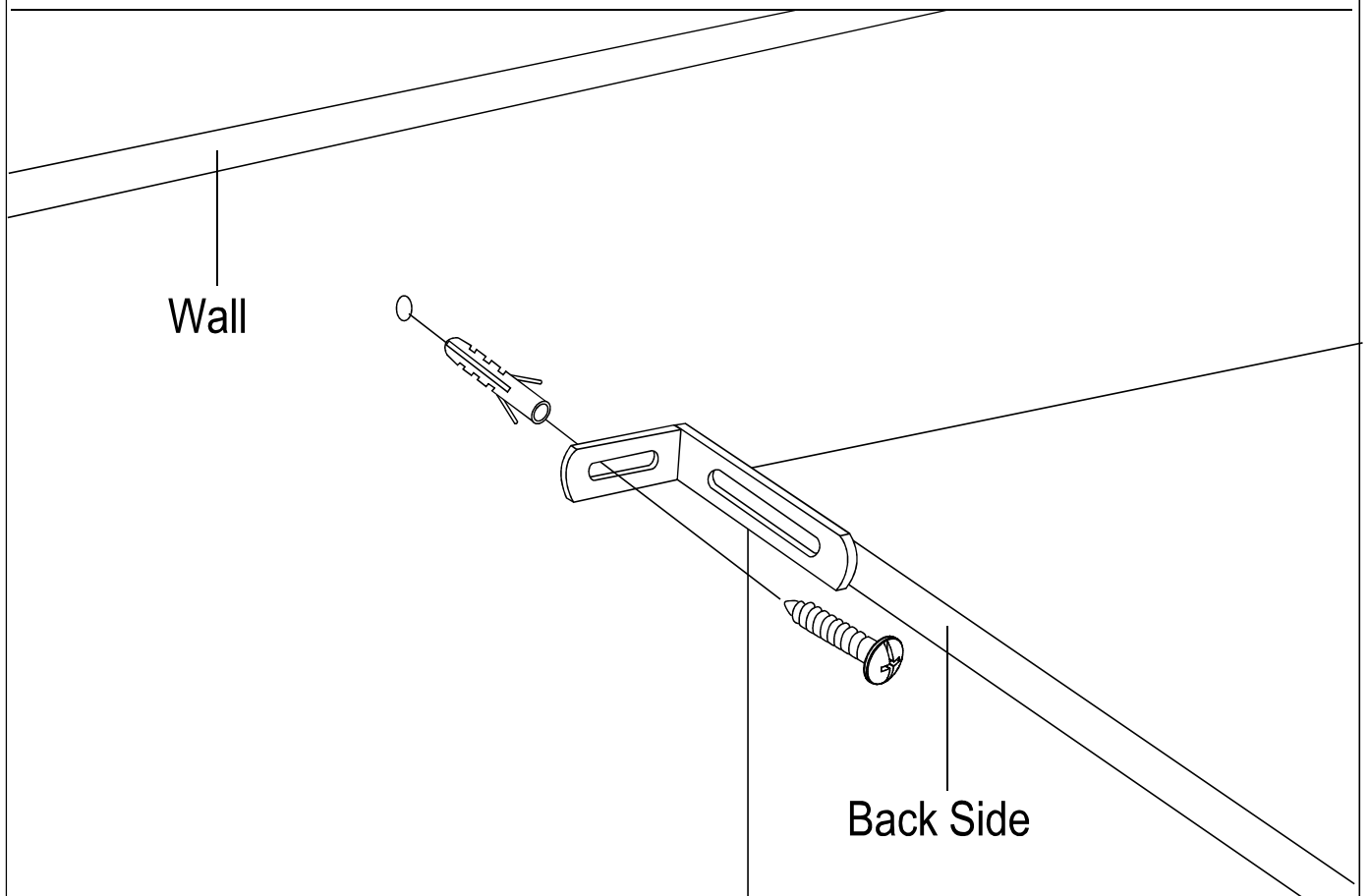
Metal x 2



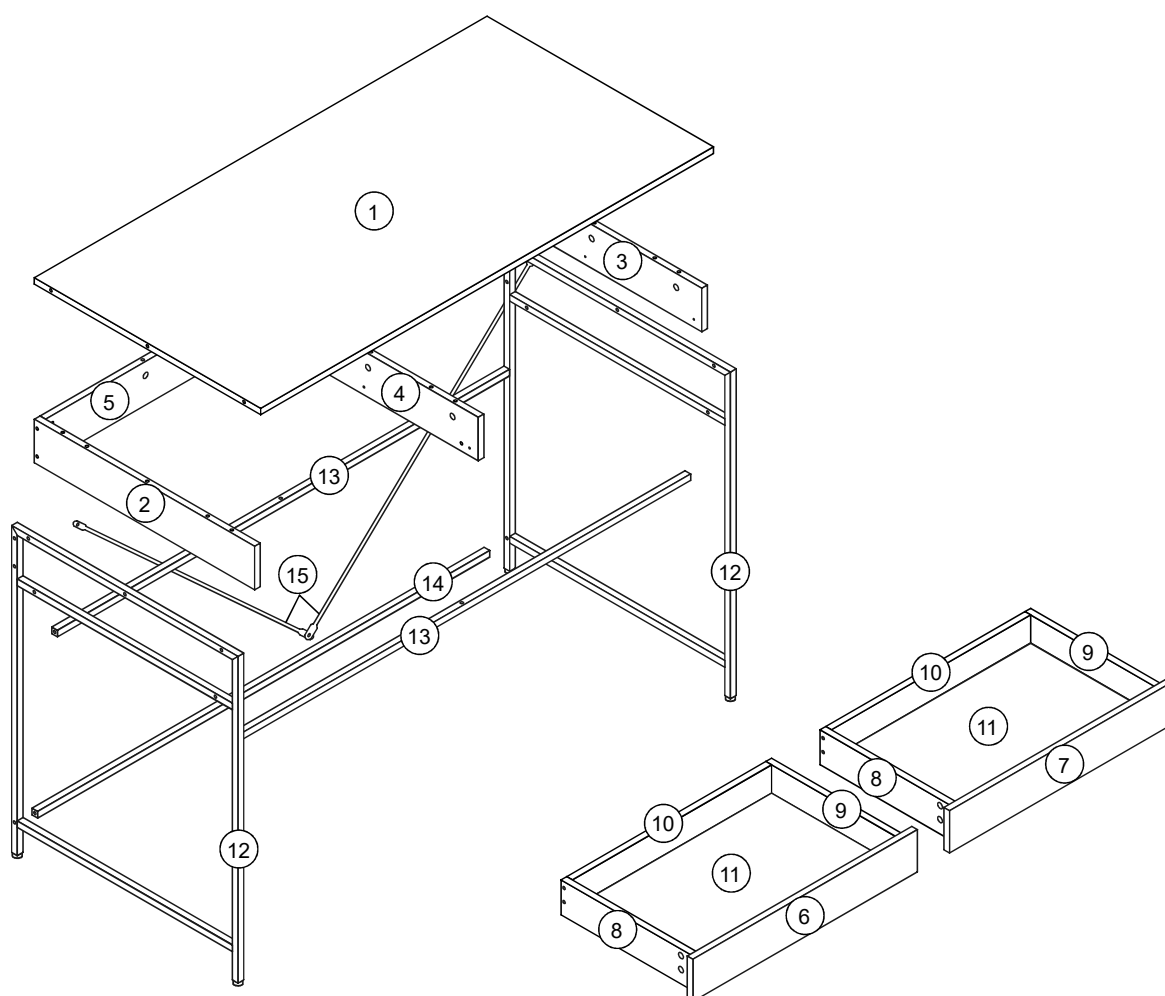
Wall Nut x 2



Screw x 2



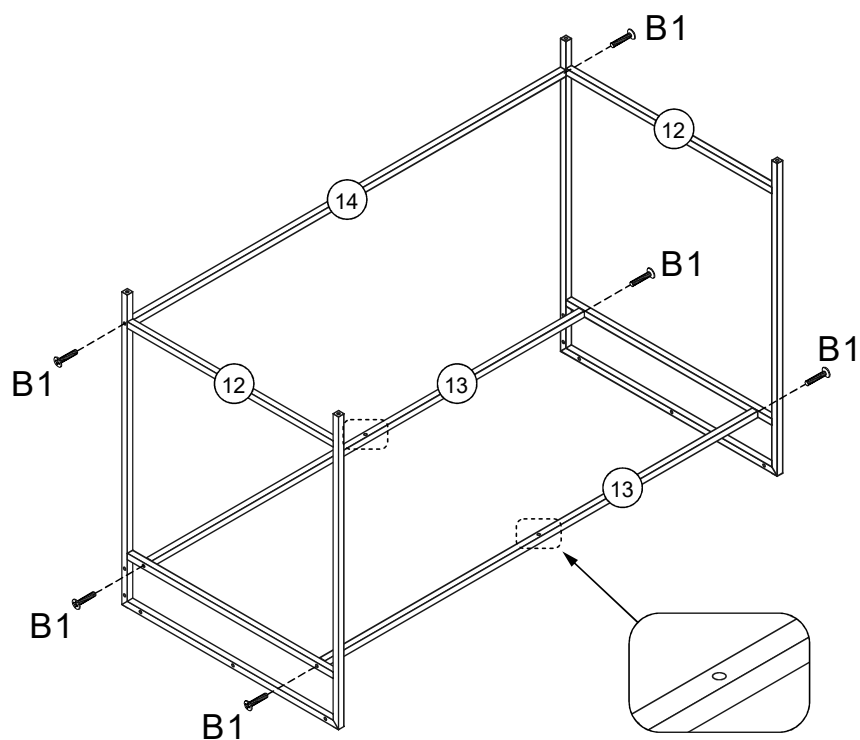
PARTS LIST



1	Top panel	6	Left Front Drawer Panel	11	Bottom Drawer Panel
2	Left Side Panel	7	Right Front Drawer Panel	12	Metal Frame
3	Right Side Panel	8	Drawer Left Panel	13	Metal Tube
4	Middle Panel	9	Drawer Right Panel	14	Metal Tube
5	Back Panel	10	Drawer Back Panel	15	Metal Tube

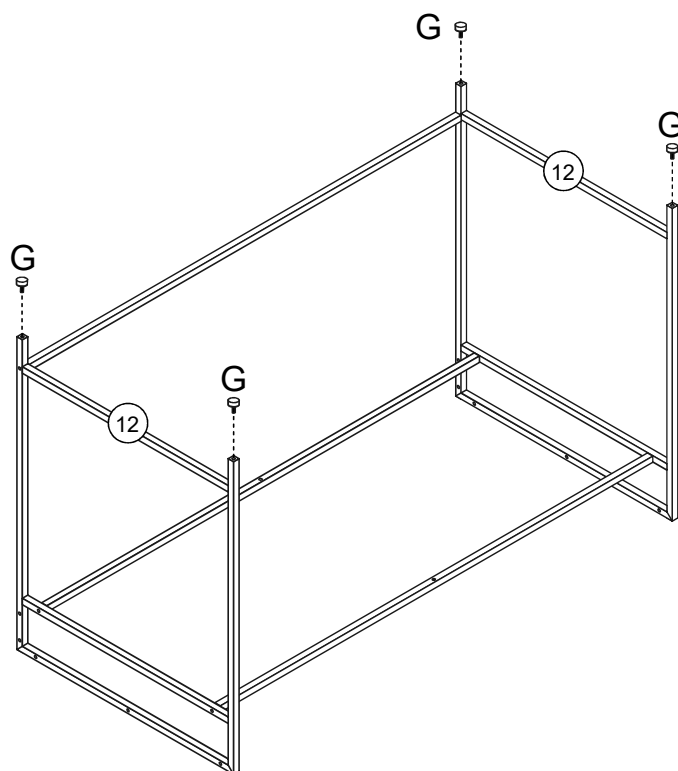
A Bolt 19pcs	B1 M6X25mm 6pcs	B2 M6X12mm 3pcs	C ST3.5X12mm 24pcs	D1 ST5X50mm 18pcs
D2 ST5X60mm 4pcs	E Drawer slideway 4pcs	F 8X30mm 6pcs	G M6X15X10 4pcs	H ST4X25mm 2pcs
I Wall Nut 2pcs	J Metal 2pcs	K 19pcs		

STEP 1



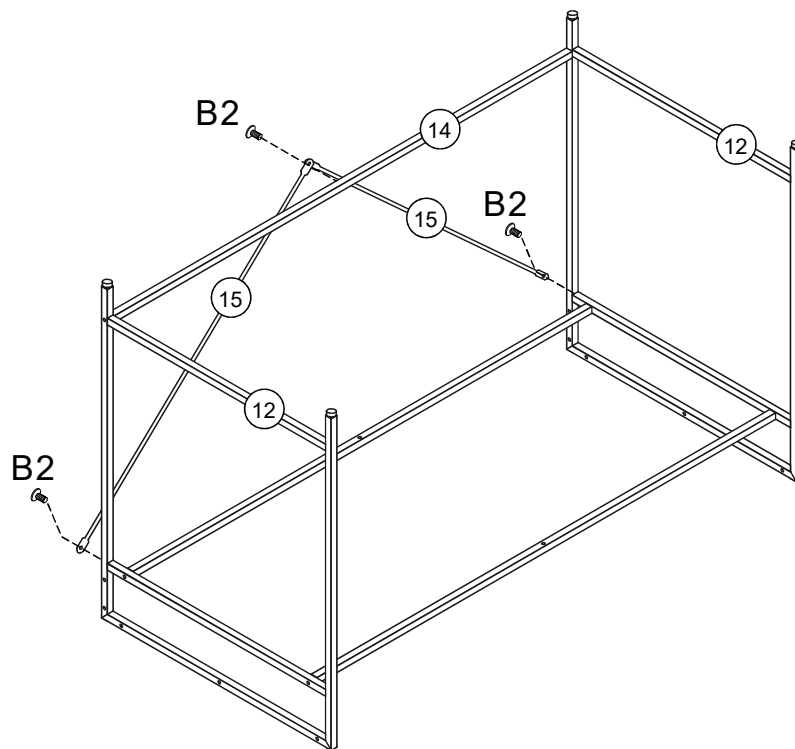
Assemble metal tube (13)&(14) to metal frame (12) using bolt (B1).

STEP 2



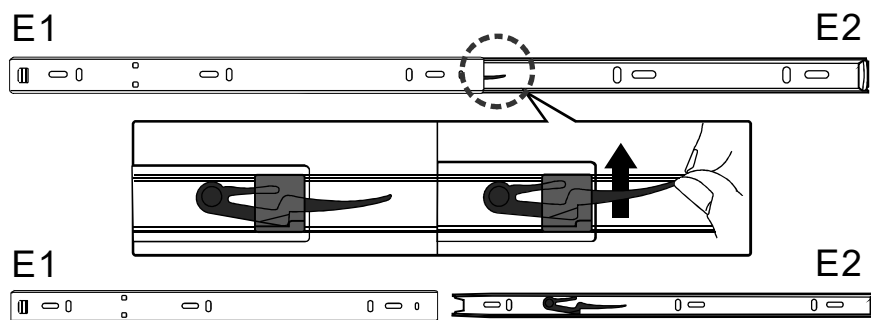
Assemble fixed feet (G) to metal frame (12).

STEP 3



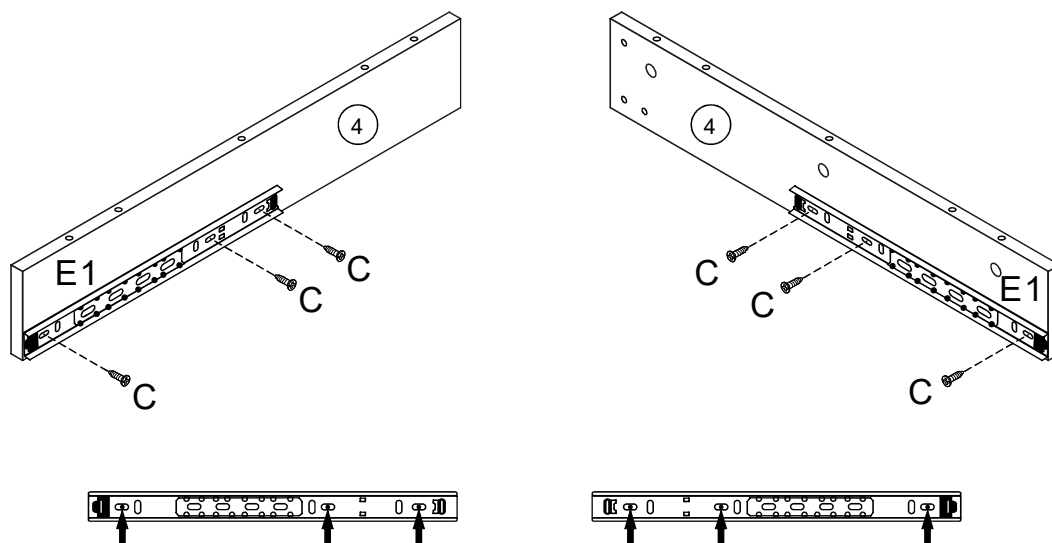
Assemble metal tube (15) to metal frame (12) and metal tube (14) using bolt (B2).

STEP 4



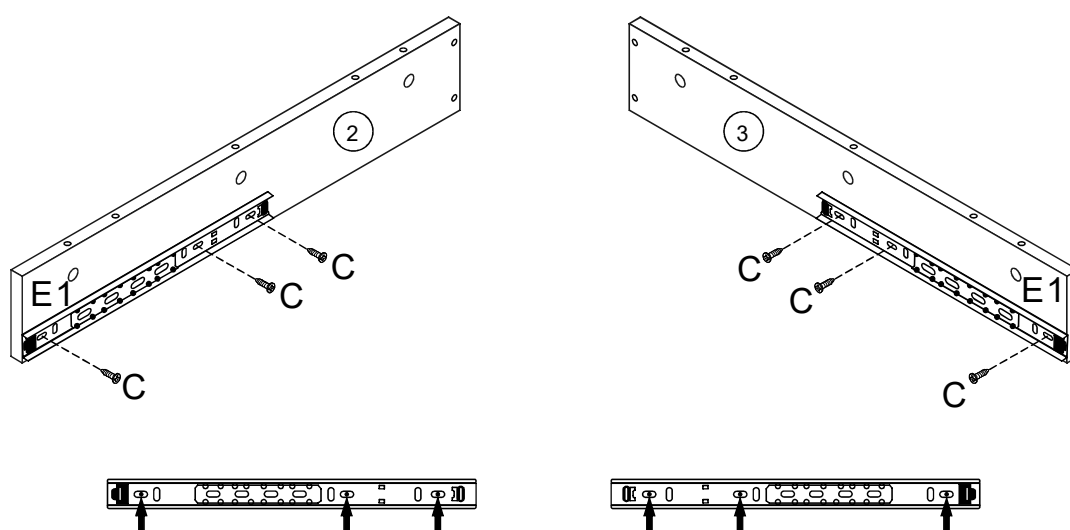
Raise the plastic tab on the runners and separate E1 from E2.

STEP 5



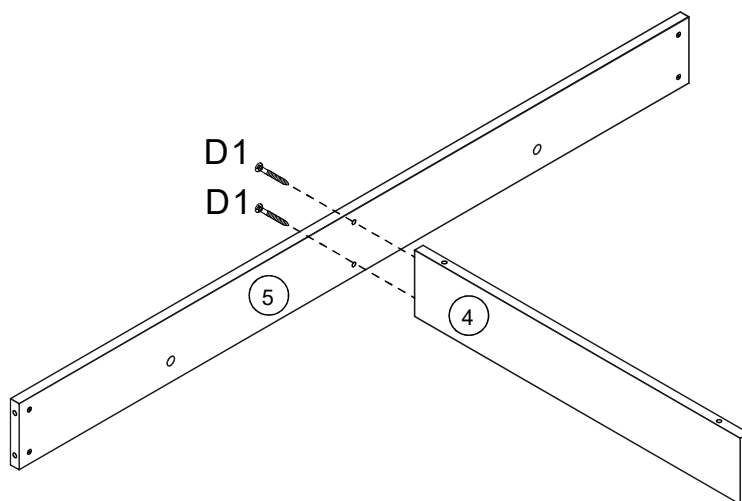
Assemble Drawer slideway (E1) to middle panel (4) using screw (C).

STEP 6



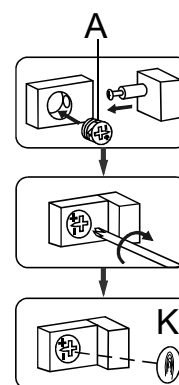
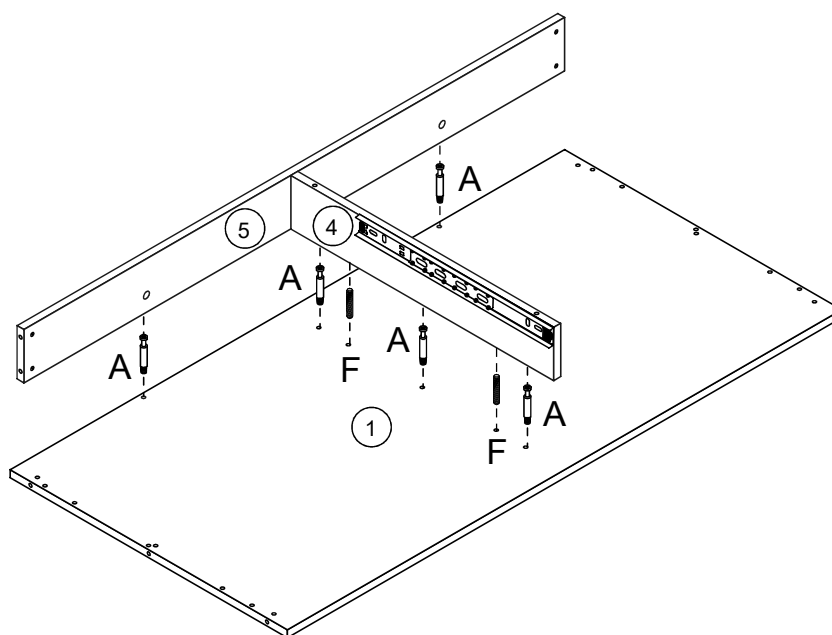
Assemble Drawer slideway (E1) to left side panel (2) and right side panel (3) using screw (C) .

STEP 7



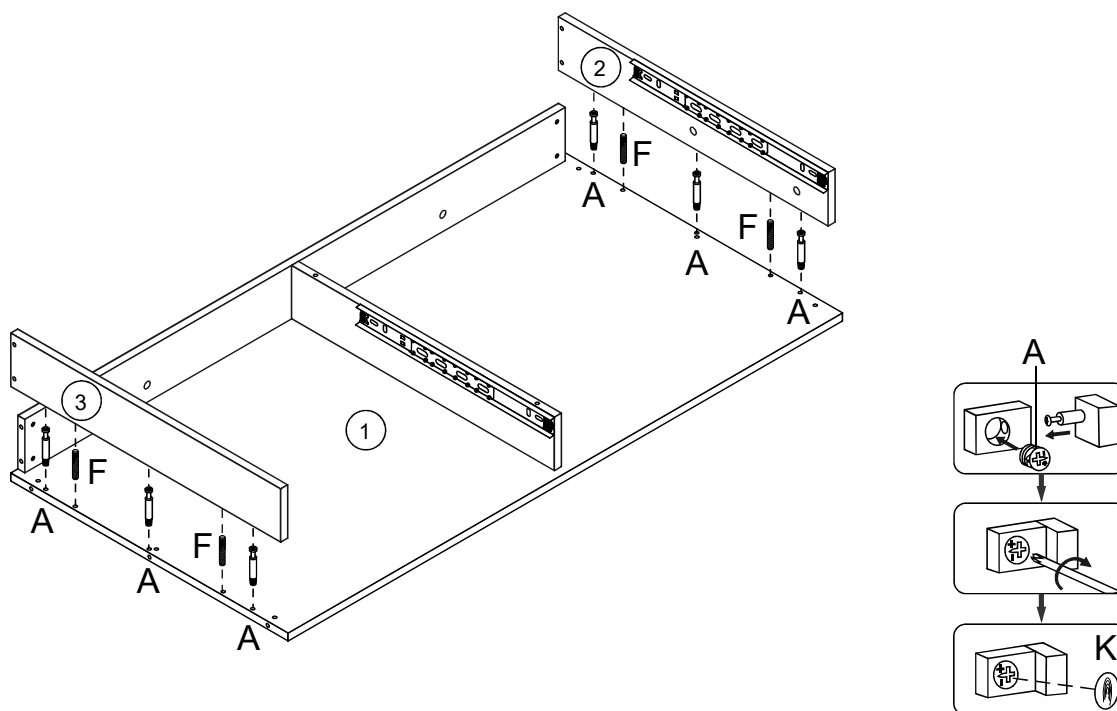
Assemble middle panel (4) to back panel (5) using screw (D1).

STEP 8



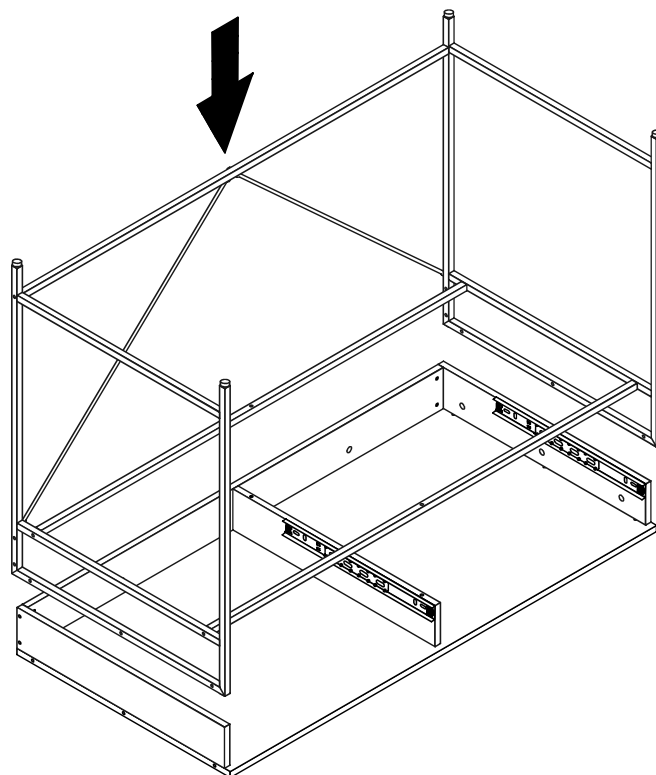
Assemble top panel (1) to back panel (5) and middle panel (4) using bolt (A) and wood dowel (F). Place sticker K to cover assembled bolt (A).

STEP 9



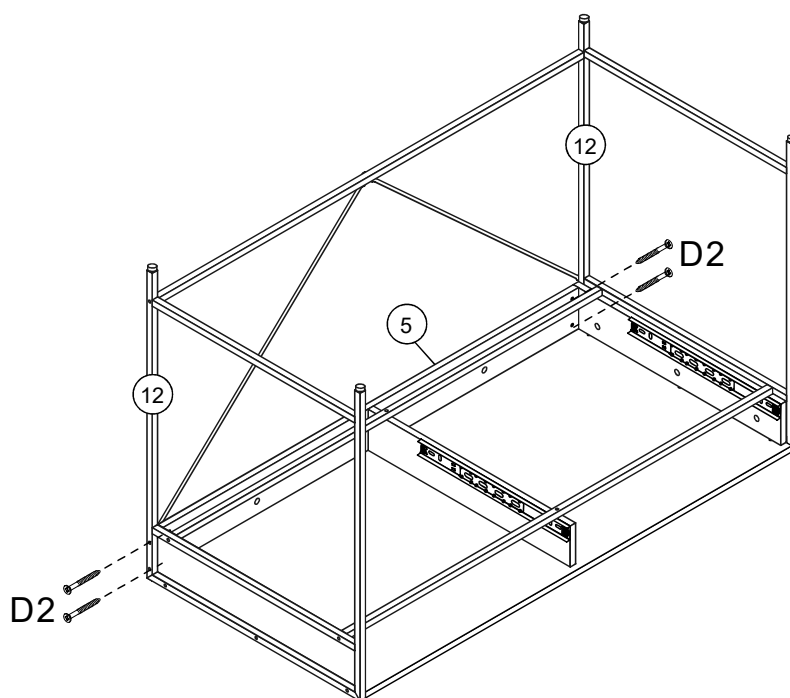
Assemble top panel (1) left side panel (2),right side panel (3) using bolt (A) and wood dowel (F). Place sticker K to cover assembled bolt (A).

STEP 10



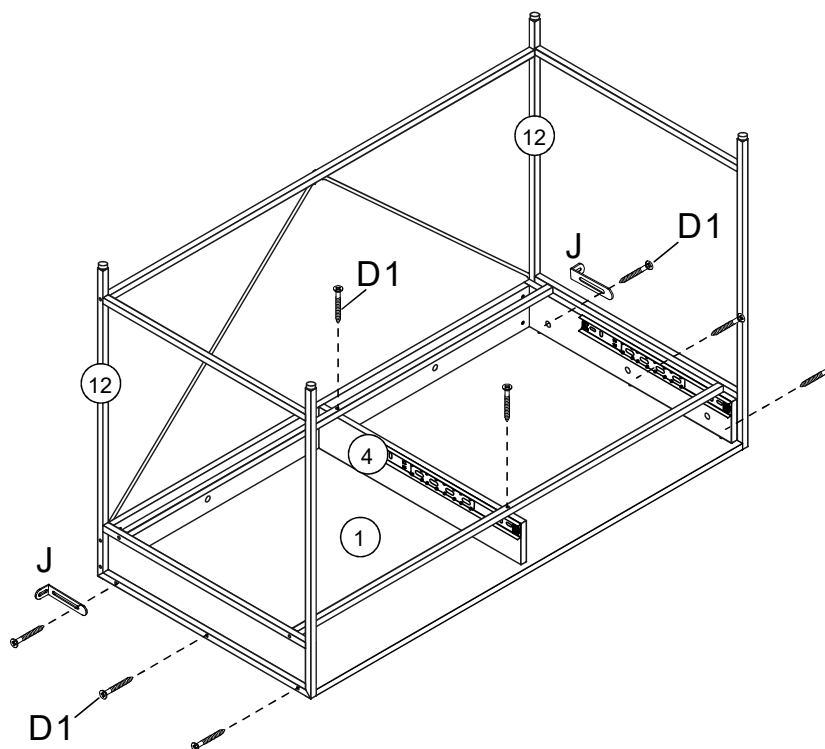
Put assembled steel frame as the figure shown.

STEP 11



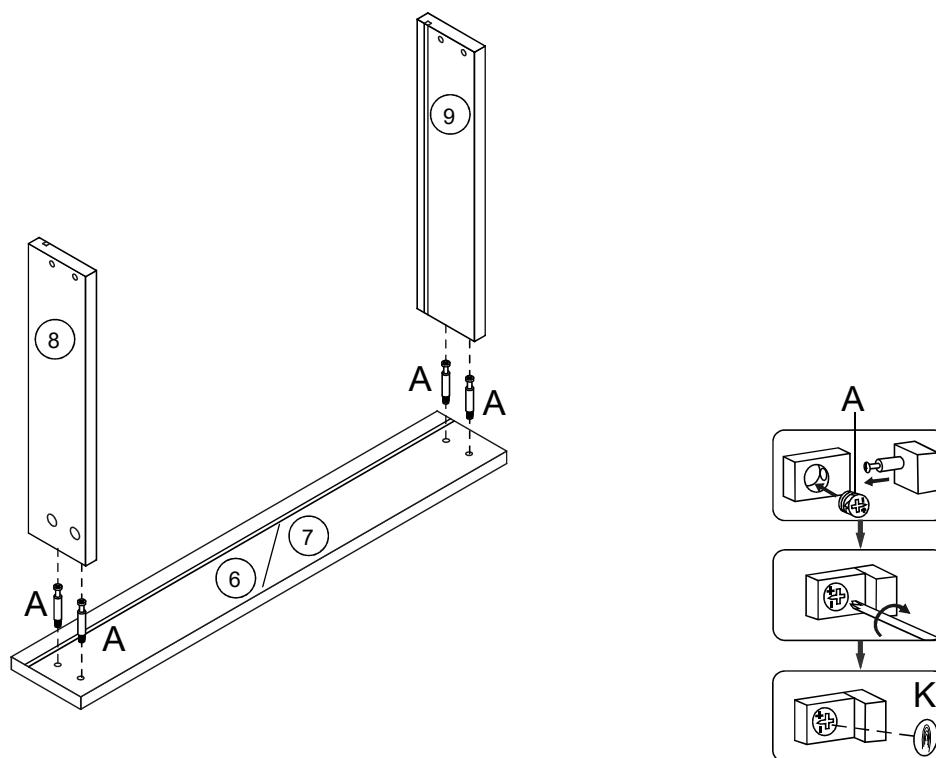
Connect metal fram (12) and back panel (5) and screw (D2).

STEP 12



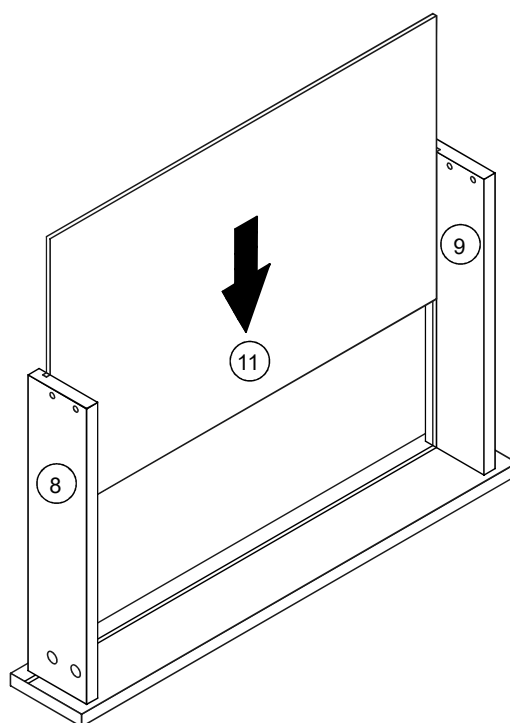
Connect metal fram (12) and top panel (1) and metal (J) using screw (D1).
Connect middle panel (4) and metal tube (13) using screw (D1).

STEP 13



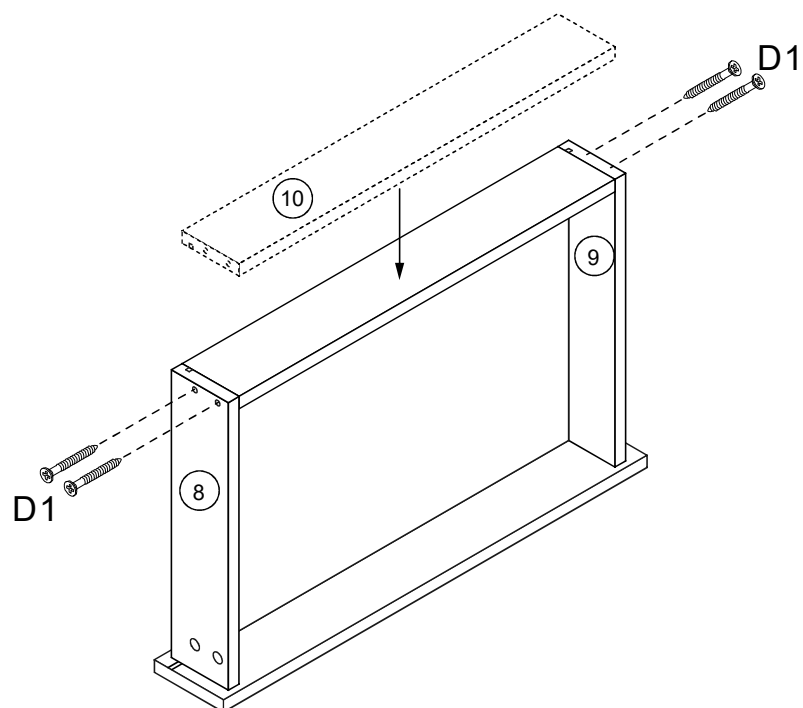
Assemble left front drawer panel (6) and right front drawer panel (7) to drawer left panel (8) and drawer right panel (9) using bolt (A). Place sticker K to cover assembled bolt (A).

STEP 14



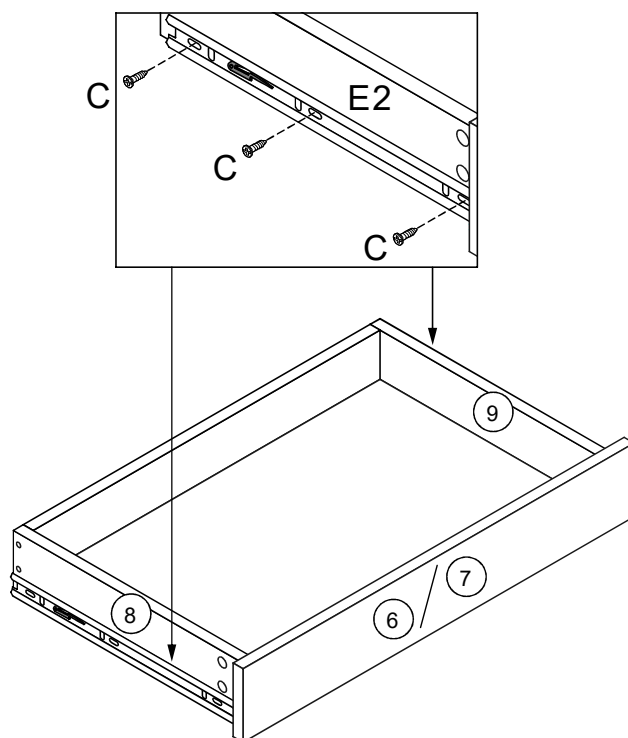
then insert drawer bottom panel (11).

STEP 15



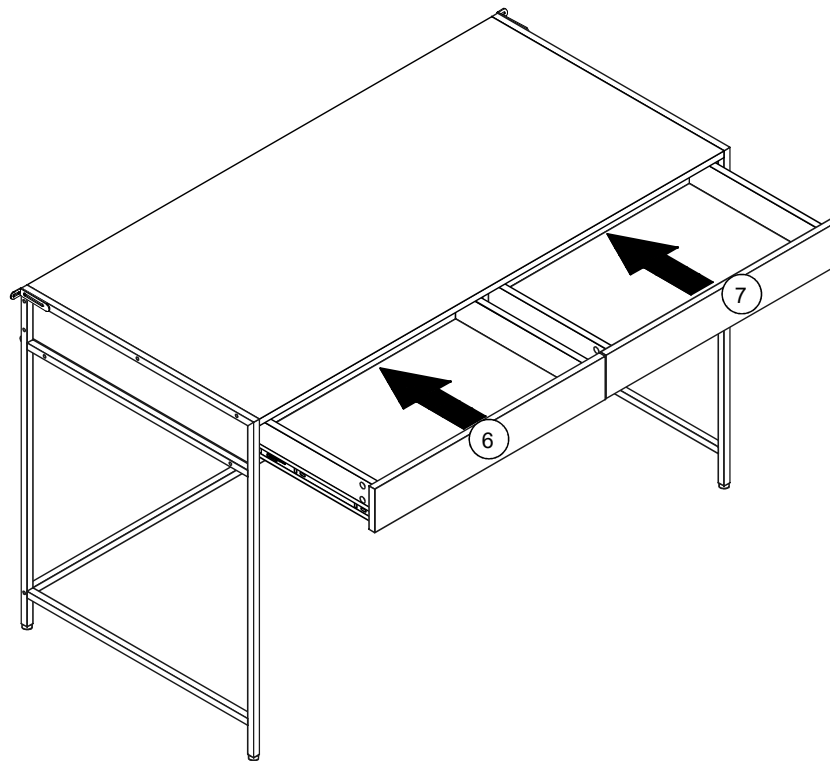
Assemble drawer back panel (10) to drawer left panel (8) and drawer right panel (9) using screw (D1).

STEP 16



Assemble drawer slideway (E2) to drawer left panel (8) and drawer right panel using screw (C).

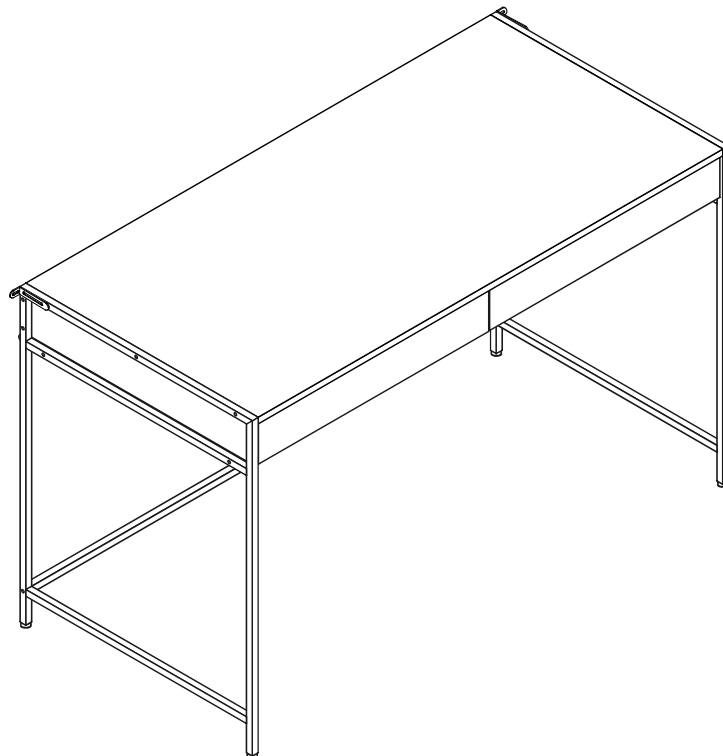
STEP 17



Insert drawer (6) and (7).

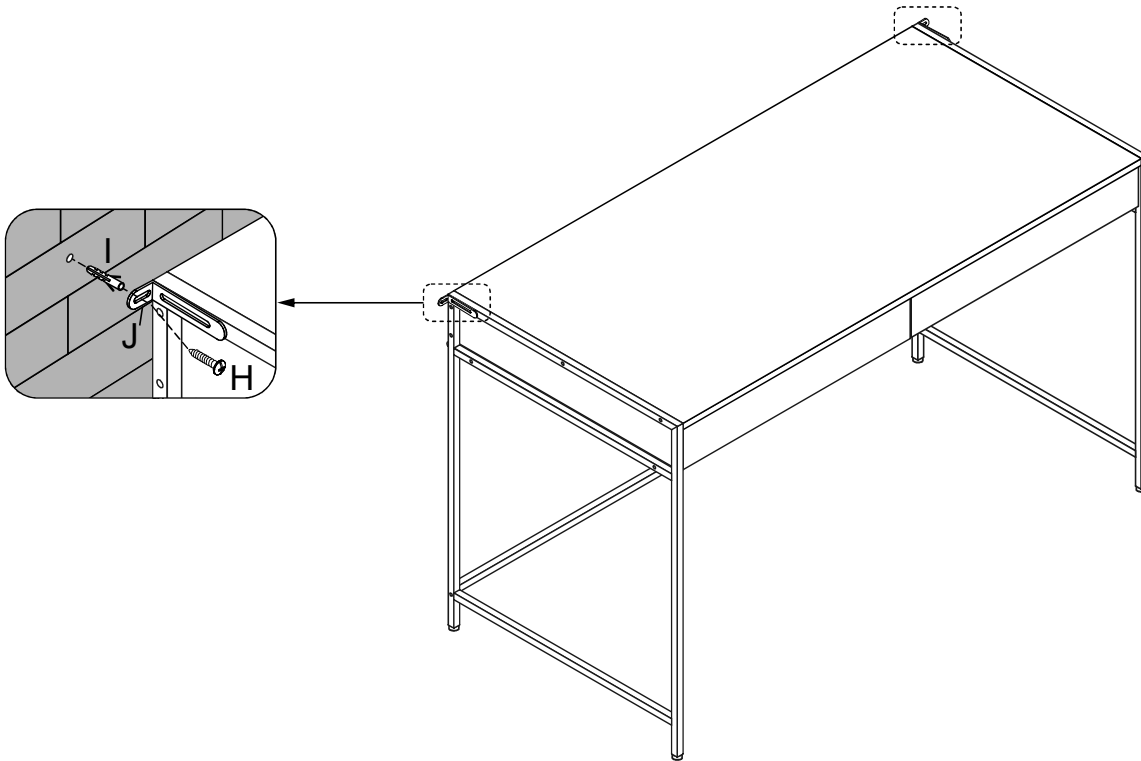
IMPORTANT NOTE: ALWAYS USE TWO PEOPLE WHEN TURNING THE TABLE OVER

STEP 18



Assembly is complete.

STEP 19



Knock in wall nut (I) on the wall, then connect metal (J) and wall nut (I) using screw (H). Fix the desk to the wall.

GENERAL PRODUCT CARE



To protect your furniture, we suggest the following:

- Avoid placing your furniture in direct sunlight.
- Do not place furniture directly under windows.
- Do not place sharp materials (knife, fork, etc.) directly onto your furniture as sharp material may scrape and damage the finish.
- Do not place material with high temperature directly onto the surface of your furniture.
- Clean up spills quickly. Water left over a prolonged period of time may cause damage. Alcohol, perfume, nail polishes, aftershave and some medication may cause severe finish damage if not cleaned immediately.
- Use a clean, soft, dry, lint free absorbent cloth to clean your furniture. Do not use any detergent as they may contain ingredients that may react and damage the finish.

NOTE: If the above care advise is not adhered to your product warranty may become void